



a) Thermal insulation on the external surface of RPV model



b) Mounting of thermocouples in the samples of RPV steel



c) Protective steel screen on the external surface of RPV model



d) Routing of thermocouple wires



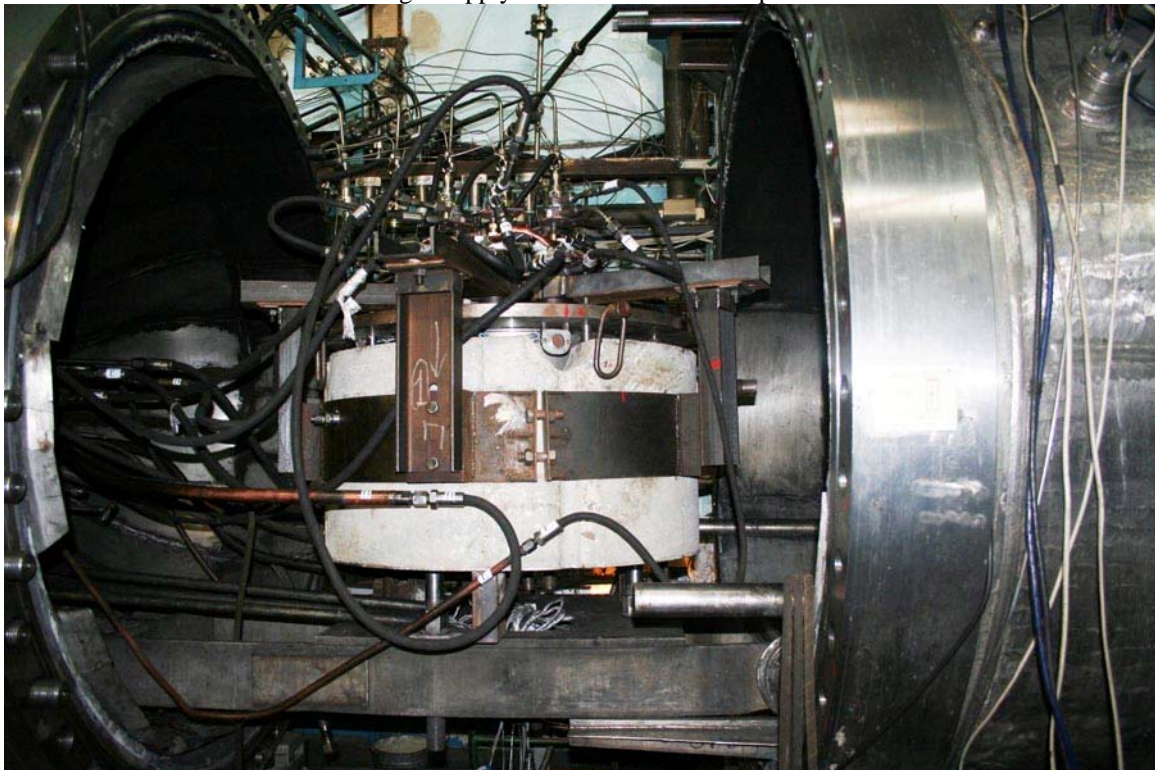
e) Pistons for transmission of the deformation to gauges



f) Mounting of the RPV model on the concrete base



g) Installation of electric wires and water delivery pipelines on plasmatron cooling and gas supply in the inter-electrode space



h) Installation of experimental section in the LAVA-B test facility and connection with the technological systems

Figure A1-1 – Stages of experimental section assemblage for the first integral experiment



a) RPV model blank



b) Blanks of RPV steel samples



c) Flange for RPV model fixing on the concrete base



d) View of RPV steel samples from the outer site of RPV model



e) View of RPV steel samples from the inner site of RPV model



f) RPV model with a flange assembled

Figure A1-2 – Units of experimental section for the second integral experiment