



Fig. 1 – Top thermal screen (view from the tantalum plate)

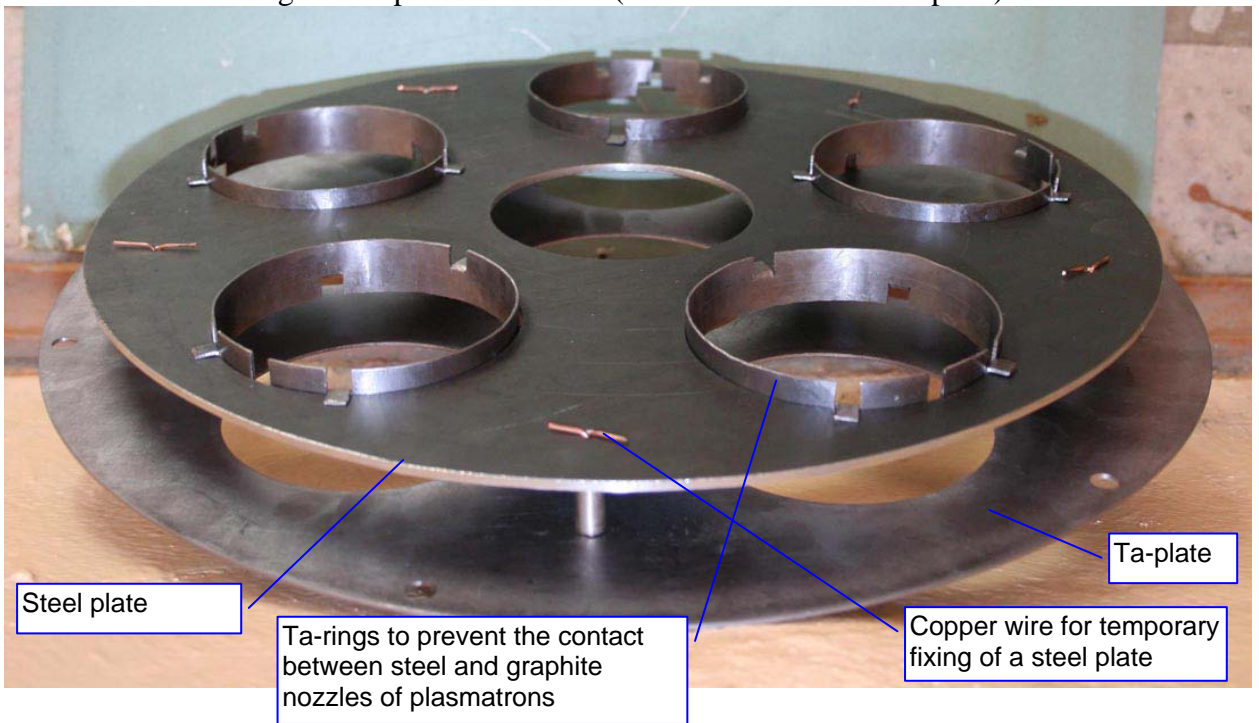


Fig. 2 – Top thermal screen (view from the steel plate)





Fig. 3 – Initial inner surface of RPV model



Fig. 4 – Initial outer surface of RPV model lined with glass cloth





Fig.5 – Outer surface of RPV model covered with glass cloth and SS sheet

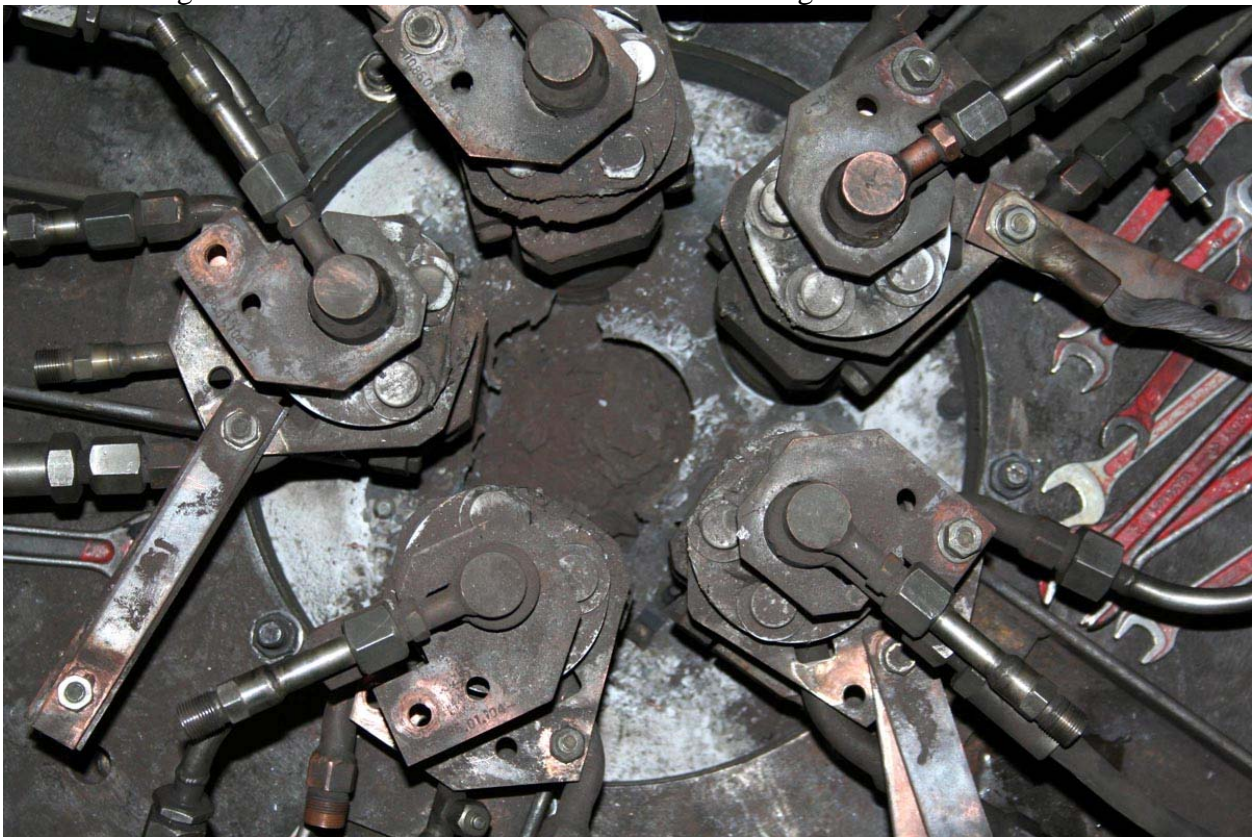


Fig. 6 – RPV model after test INVECOR-3 (cone for melt discharging has been removed)





Fig. 7 SS sheet outside of RPV model after test



Fig. 8 – Degraded surface of concrete base under RPV model



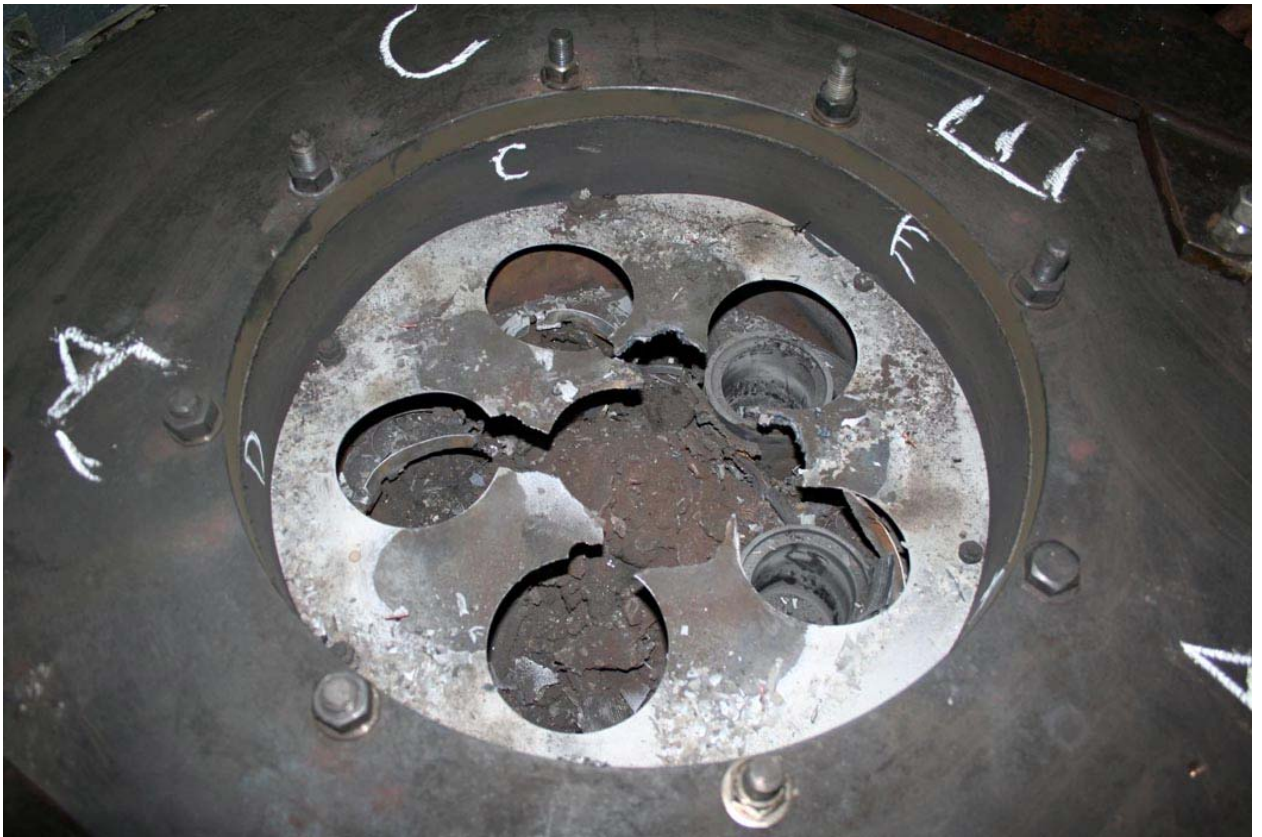


Fig. 9 – RPV model after plasmatrons removal



Fig. 10 – RPV model after Ta-plate removal





Fig. 11 – Remains of steel plate



Fig. 12 - RPV model with corium after steel plate removal



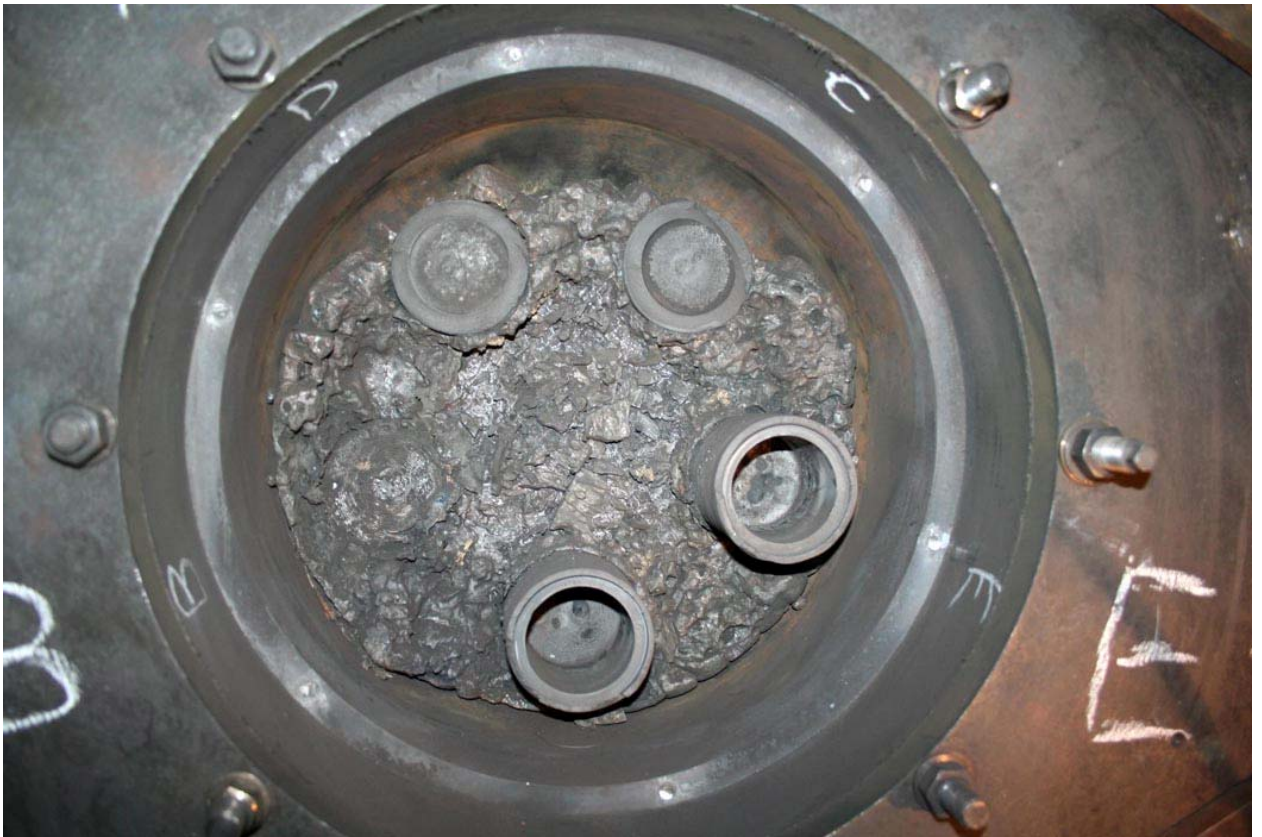


Fig. 13 – Top view of corium ingot after fragmented debris bed removal



Fig. 14 – Upper view of plasmatron nozzle with remains of protective coating





Fragment of  
steel plate fused  
with RPV model

Fig. 15 – View of RPV model after corium removal



Fig. 16 – Inner surface of RPV model after corium ingot removal





Fig. 17 - Inner surface of RPV model after corium ingot removal (close-up view of fused zone)



Fig. 18 – Upper view of corium ingot (from the site of contact with RPV bottom)





Fig. 19 – Fragment of corium ingot breaking surface



Fig. 20 – Fragment of corium ingot breaking surface





Fig. 21 – Remains of glass cloth on the outer surface of RPV model after SS-sheet removal)



Fig. 22 – Outer surface of RPV model after thermal insulation removal